



UNSW
AUSTRALIA

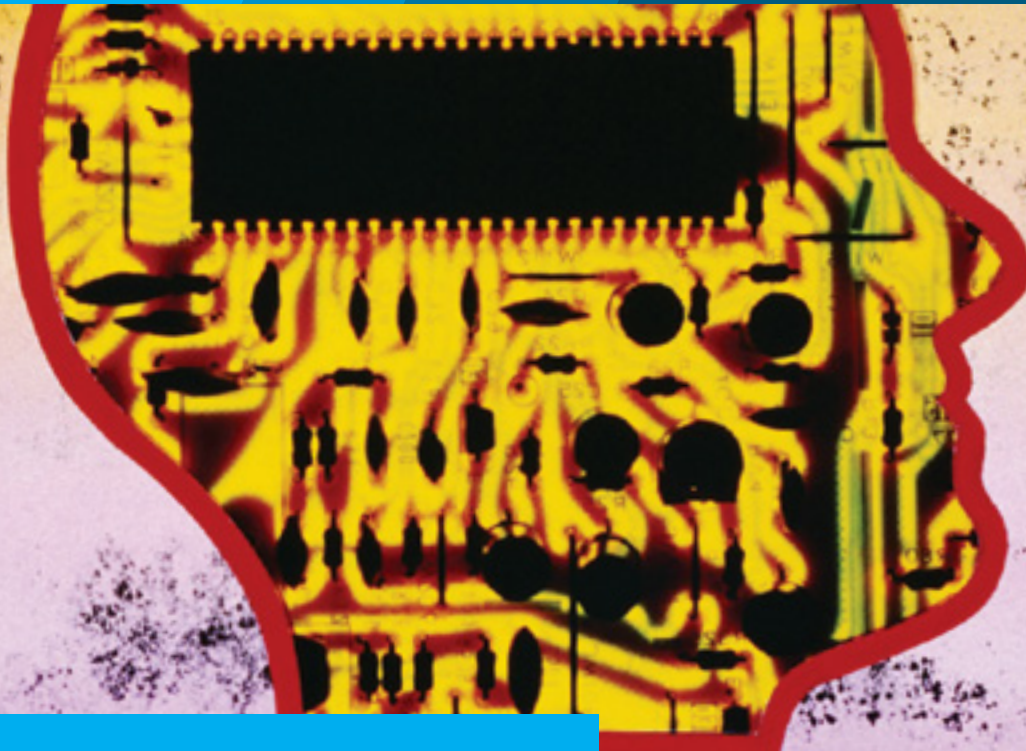
Psychology

Postgraduate Coursework Degrees and Research Degrees

Never Stand Still

Science

Psychology



The School is one of the strongest psychology departments in Australia and has excellent research and professional training facilities. It has specialist laboratories in all areas of experimental psychology, extensive computing facilities, a technical workshop, a psychology clinic and a careers research and assessment service. It has strong links with professional practitioners in the areas of clinical, forensic and neuro psychology. The School is recognised for the excellence of its research, in terms of the high levels of grants awarded, the number and quality of journal publications and the many prizes and awards made to staff and students. Many staff members have international reputations in their chosen fields and research programs are often carried out in collaboration with researchers throughout Australia and in other countries.

In addition to postgraduate research degrees, the School offers professional training degrees that are accredited by the Australian Psychology Accreditation Council (APAC) as the fifth and sixth years of study in psychology. Graduates of these professional training degrees are eligible to apply for registration as a general psychologist, full membership of the Australian Psychological Society (APS) and associate membership of its specialist colleges. With further appropriate professional experience, graduates are eligible to apply for full membership of the relevant specialist college of the APS.

Contacts

Research

A/Prof Lenny Vartanian

+61 2 9385 8758

l.vartanian@unsw.edu.au

Coursework

Forensic Psychology

A/Prof Richard Kemp

+61 2 9385 1401

richard.kemp@unsw.edu.au

Clinical Psychology

Dr Angela Nickerson

+61 2 9385 0538

a.nickerson@unsw.edu.au

psy.unsw.edu.au

Coursework Degrees

Master of Psychology (Forensic)

Program Code:	8257	The Forensic program provides professional training for provisional psychologists* who intend to pursue a career in forensic settings – police, courts, prisons, probation and parole, guardianship, child protection, statutory tribunals (e.g. mental health), worker compensation, licensing of special programs and community services, public policy and legislative review. <i>* Students that are enrolled in a psychology higher degree accredited at fifth year or higher must be provisionally registered from the start of enrolment in the degree. Students maintain provisional registration for the duration of enrolment in any component of an accredited qualification, including coursework, practicum and research thesis (except for doctoral students granted early general registration). Refer to http://www.psychologyboard.gov.au/Registration for more information.</i>
Commencement:	Semester 1 only	
Units of credit:	96	
Length of study:	2 years full-time	
Entry requirement:	An accredited four-year, or three-year plus a fourth year, APAC-accredited sequence in psychology, including a major research thesis, completed with Honours Class 1 (85%), or high Second Class Honours (75%) or their equivalents within the last 10 years.	

Master of Psychology (Clinical)

Program Code:	8256	The Clinical program provides professional training for provisional psychologists* who intend to work as clinicians in hospitals, community health and other settings where they might be engaged in health promotion and the diagnosis, assessment, and treatment of people with a range of psychological problems and disabilities. <i>* Students that are enrolled in a psychology higher degree accredited at fifth year or higher must be provisionally registered from the start of enrolment in the degree. Students maintain provisional registration for the duration of enrolment in any component of an accredited qualification, including coursework, practicum and research thesis (except for doctoral students granted early general registration). Refer to http://www.psychologyboard.gov.au/Registration for more information.</i>
Commencement:	Semester 1 only	
Units of credit:	96	
Length of study:	2 years part-time	
Entry requirement:	An accredited four-year, or three-year plus a fourth year, APAC-accredited sequence in psychology, including a major research thesis, completed with Honours Class 1 (85%) or equivalent within the last 10 years.	

Research Degrees

Doctor of Philosophy

Program Code:	1400	A PhD requires the completion of a piece of research that demonstrates a significant and original contribution to knowledge in the field of study. Candidates acquire advanced specialist research training under academic supervision. The candidate's thesis summarises the research and provides evidence for independent thought and critical analysis, effective communication and expert knowledge of the discipline in the international context.
Commencement:	Semester 1 and Semester 2	
Length of study:	3.5 to 4 years of advanced study leading to the submission of a thesis. Minimum duration for completion is 3.5 years.	
Entry requirement:	An accredited four-year Honours degree in psychology with First Class or high Second Class Honours.	

Doctor of Philosophy/Master of Psychology

Program Code:	1404 (Clinical) 1405 (Forensic)	These elite programs require the completion of a full PhD in an area of specialist study in psychology. Students simultaneously undertake professional training, as a provisional psychologist*, leading to an accredited professional qualification in the areas of forensic or clinical psychology (see Coursework Degrees). <i>* Students that are enrolled in a psychology higher degree accredited at fifth year or higher must be provisionally registered from the start of enrolment in the degree. Students maintain provisional registration for the duration of enrolment in any component of an accredited qualification, including coursework, practicum and research thesis (except for doctoral students granted early general registration). Refer to http://www.psychologyboard.gov.au/Registration for more information.</i>
Commencement:	Semester 1 only	
Length of study:	4 to 5 years of advanced study leading to the submission of a thesis. Minimum duration for completion is 4 years.	
Entry requirement:	An accredited four-year, or three-year plus a fourth year, APAC-accredited sequence in psychology, including a major research thesis, completed with Honours Class 1 (85%) or equivalent within the last 10 years.	

Master of Science (by Research)

Program Code:	2450	This program requires the completion of an original piece of research, more limited in scope and nature than a PhD. Candidates develop mastery of appropriate methodology and learn the fundamentals of research. Findings are presented in a thesis that places the work in the wider context of the discipline.
Commencement:	Semester 1 and Semester 2	
Length of study:	1.5 to 2 years of advanced study leading to the submission of a thesis. Minimum duration for completion is 1.5 years.	
Entry requirement:	An accredited four-year Honours degree in psychology with Second Class Honours.	